

LSD Deputy Report

March 13 –
March 27, 2013

Dianne Napier

Summary

- CHL Chilled Water Pipe Repair completed & Cooldown Started!
- C-100 #8 installed SL26
- Waveguide Installation 1L22, 23, 24
- 2A East Arc Final alignment continues
- 2A TC Recombiner magnets started
- LCW installation for Septas continue (1R & 1S)
- Pedestal forms & grouting
- 2T region cartridges, caps, dipoles, girders
- Warm region girders N&SLinac hook ups/bake outs
- Trim magnet cable installation continues 1R/2S/2R
- Tested Hall D ODH system (NLinac to Hall D)
- MO System Line Setup/Cals
- MCC renovation: HVAC removed, roof work continues
- Tunnel Leak Repairs NLinac continues
- B68 extension: siding installation
- Counting House renos continue – 2nd floor power outage
- 480VAC breaker PM completed - breaker repairs/additional outage needed



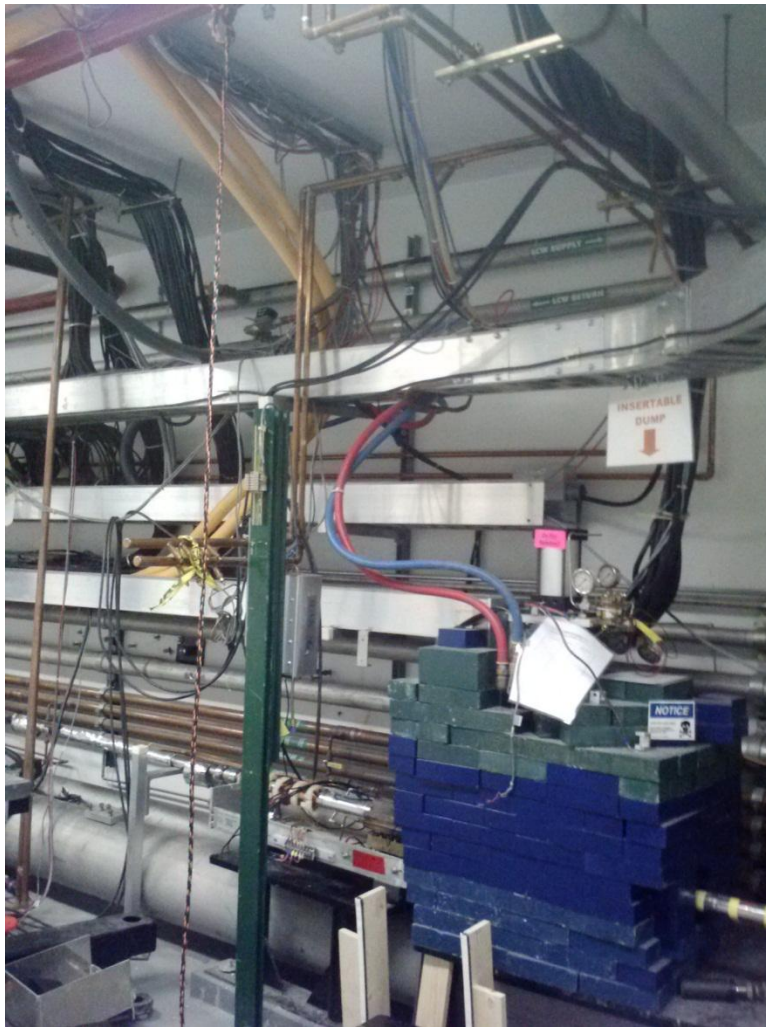
It's Cold In the Tunnel!



C-100 #8 SL26



2L22 bake-out



NI Insertable Dump Cabling



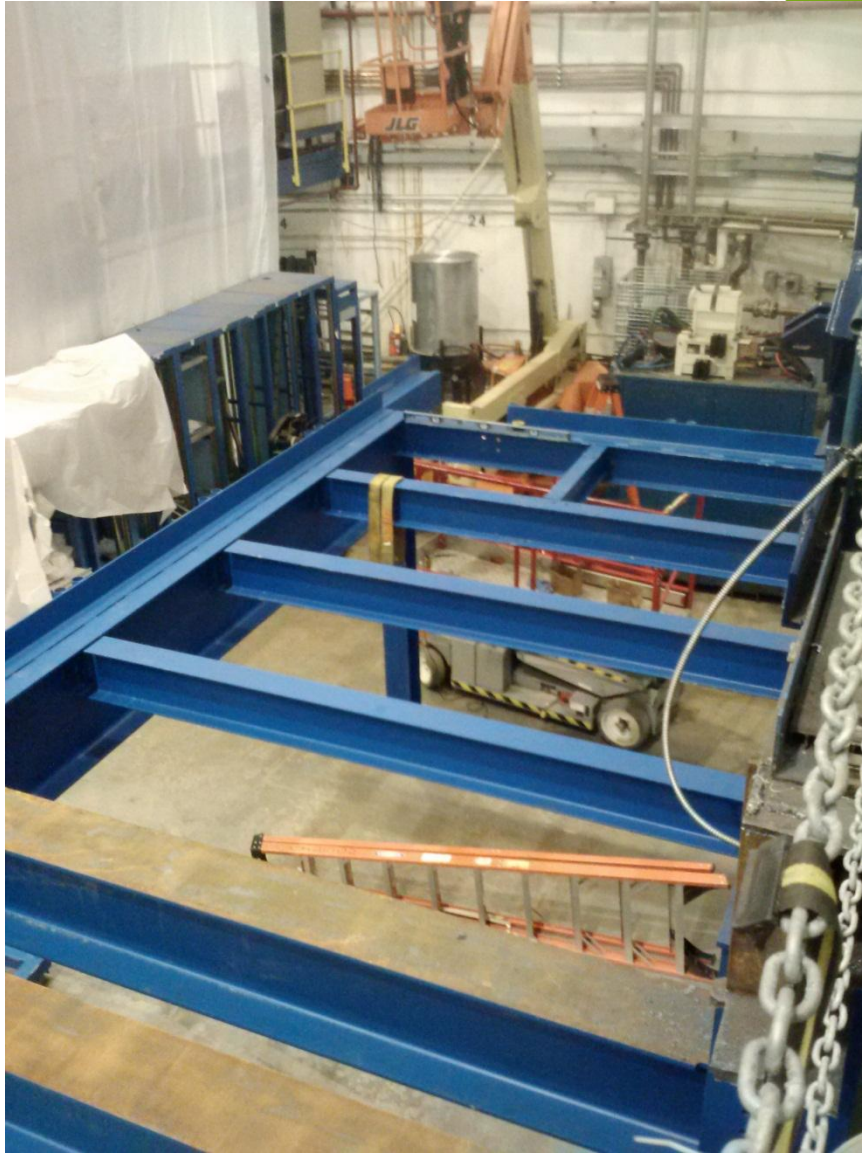
Girder Cable Terminations



12Gev Decarad System



Transport Channel to Halls



Hall B Space Frame Construction